





SCHEMA BIRD, CAT, WOLLY

design meneghello paoelli
associati

~~~~~  
Sembra di sentirlo cinguettare. È il radiatore Schema Bird in cui la figura del volatile è ottenuta interpretando con fantasia il modello Schema Plain.

Schema Cat è un radiatore multifunzionale. Il corpo del termoarredo sagomato a forma di gatto è destinato a scaldare la camera dei bambini oppure l'ambiente bagno nella versione con il tubo flessibile che simula il collare dell'animale e adibito a porta salviette.

Dalle linee arrotondate e con due buffe zanne prominenti il radiatore Wolly assume le sembianze di un simpatico tricheco. Il muso dell'animale è ottenuto con pochi tagli stilizzati sull'ampia superficie radiante realizzata in alluminio.

~~~~~  
You expect it to start chirping any moment: it is the Schema Bird radiator featuring a bird-like image obtained by reinterpreting with imagination the Schema Plain.

Schema Cat is a multifunctional radiator. With its original cat-shaped body, this radiator goes well in a child's room, or, in its version with a hose simulating a cat collar and serving as a towel warmer, in a bathroom.






With its rounded lines and funny elongated tusks, Schema Wolly takes on the appearance of a friendly walrus. The animal's muzzle has been obtained with a few stylised signs cut into a large radiant surface made from aluminium.

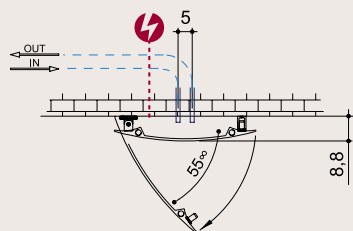
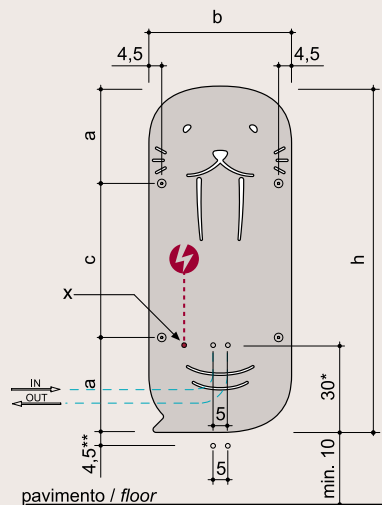
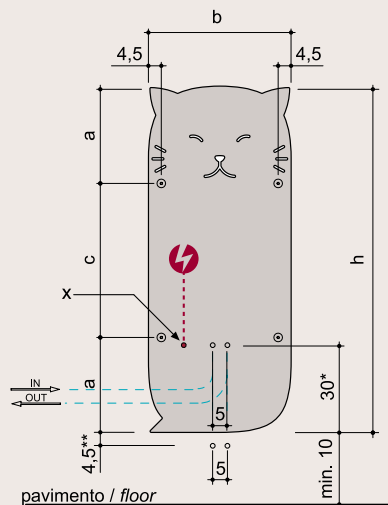
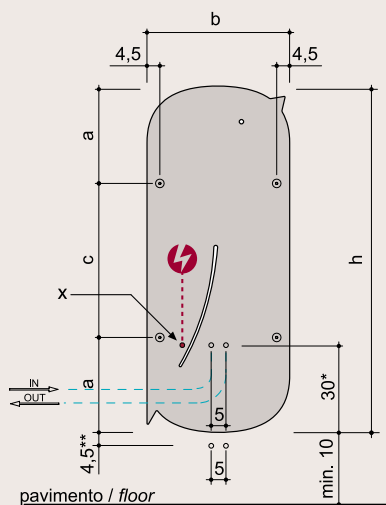


*Finiture fotografate in queste pagine:
Blu chiaro RAL 5012, Bianco puro RAL 9010 sablè,
Bismuth MX302L.*

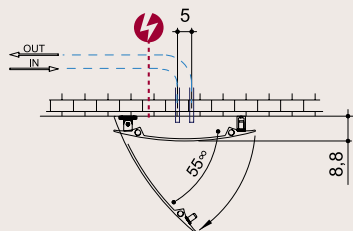
*Finishes photographed on these pages:
Blu chiaro RAL 5012, Bianco puro RAL 9010 sablè,
Bismuth MX302L.*

SCHEMA BIRD, CAT, WOLLY

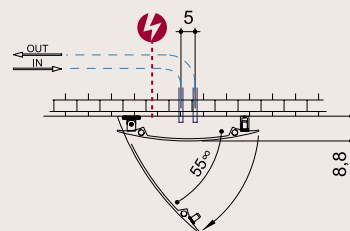
hxb (cm)	n numero elementi/ elements number	peso a vuoto / weight empty (kg)	volume d'acqua / water volume (dm ³)	a (cm)	c (cm)	d (cm)	e (cm)	Qs resa termica / thermal yield □t 50°C (watt)	Q potenza elettrica / electrical power (watt)	versione mista*** / combined version***	fissa / not opening	fissa / not opening
												
verticale/vertical												
120,0x50,0	1	16,6	0,66	33,0	54,0	-	-	550	500	•	•	•



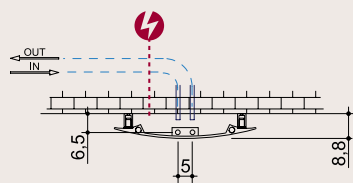
versione apribile
opening version



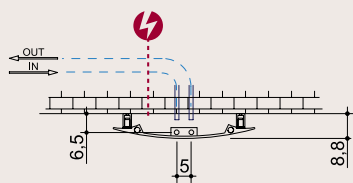
versione apribile
opening version



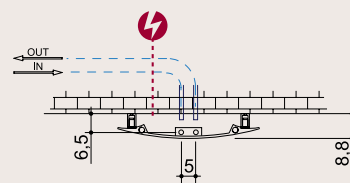
versione apribile
opening version



versione fissa
not opening version



versione fissa
not opening version



versione fissa
not opening version

*.
per versione apribile
**.
per versione fissa utilizzando
valvole Ridea
***.
a richiesta con sovrapprezzo
solo per versione apribile
X.
posizione ingresso a muro del
cavo (per versione elettrica
e mista)

*.
for opening version
**.
for not opening version using
Ridea valves
***.
upon request with surcharge for
opening version only
X.
electrical wire wall entry
position (for electric and
mixed version)